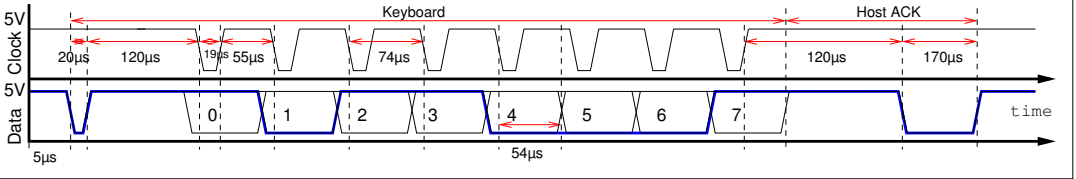


Amiga 500/1000/2000 Keyboard Protocol

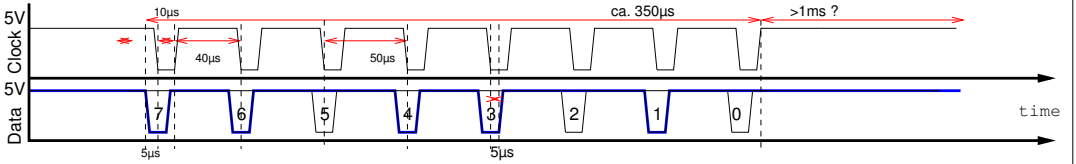
Communication from device to host with host ACK
 Example: "K", scancode 0x8d, 10001101



sid: kbd_signaling_amiga.fig,v 1.2 2007/12/09 23:56:08 akurz Exp \$

Amstrad PC1512 Personal Computer Keyboard Protocol

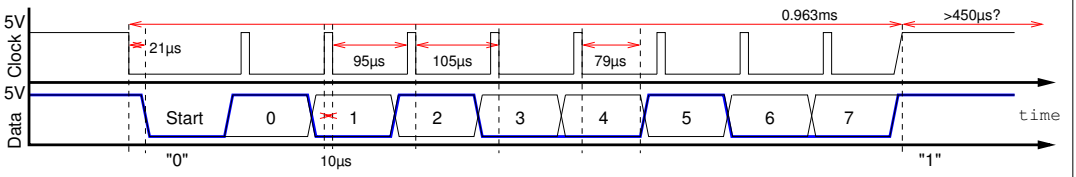
Exclusive communication from device to host
 Example: "K", scancode 0x25, 00100101 (MSBF)



sid: kbd_signaling_amstradpc1512.fig,v 1.1 2008/09/02 10:00:59 akurz Exp \$

Micromint 16 Keyboard Protocol

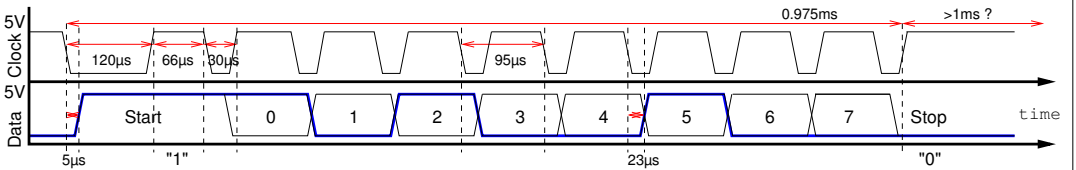
Exclusive communication from device to host
 Example: "K", scancode 0x25, 00100101



sid: kbd_signaling_micromint16.fig,v 1.1 2008/06/25 07:21:54 akurz Exp \$

IBM PC/XT Keyboard Protocol

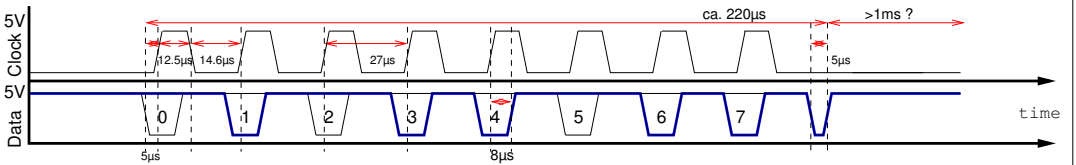
Exclusive communication from device to host
 Example: "K", scancode 0x25, 00100101



sid: kbd_signaling_pcxt.fig,v 1.1 2007/12/09 18:19:42 akurz Exp \$

Tandy 1000 Personal Computer Keyboard Protocol

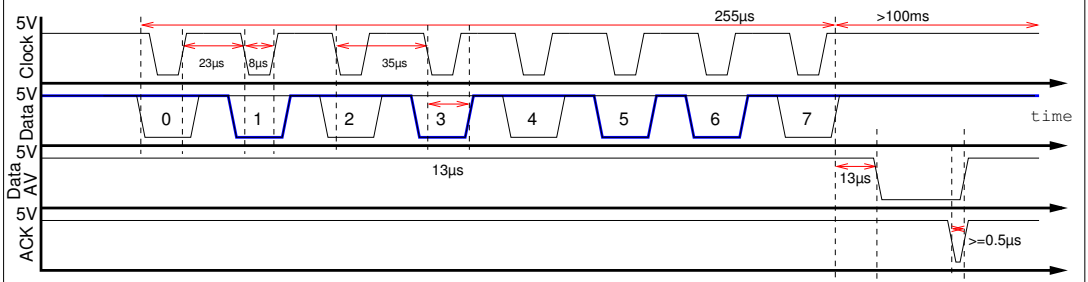
Exclusive communication from device to host
 Example: "K", scancode 0x25, 00100101



sid: kbd_signaling_tandy1000.fig,v 1.1 2007/12/09 18:19:35 akurz Exp \$

IBM 3104 Terminal Keyboard Protocol

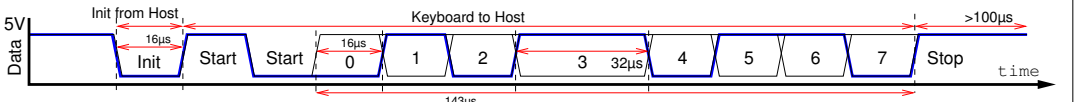
Exclusive communication from device to host
 Example: "K", scancode 0x6a, 01010110



sid: kbd_signaling_ibm3104.fig,v 1.1 2008/04/25 21:56:03 akurz Exp \$

Apple Lisa Keyboard Protocol

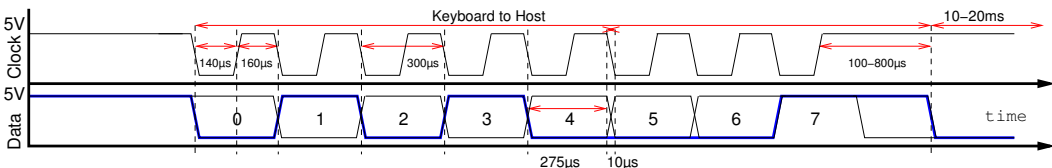
Uni-directional triggered by the Host
 Example: "L"-Break, scancode 0x6a, 01010110



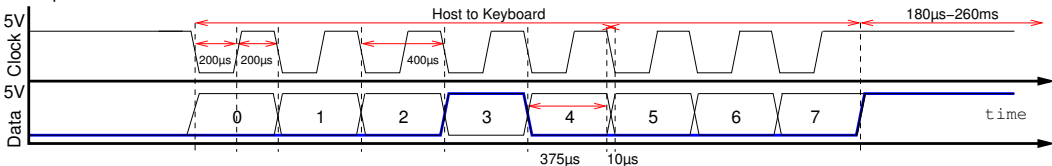
sid: kbd_signaling_lisa.fig,v 1.1 2009/01/10 19:26:06 akurz Exp \$

Mac 128k/512k/Plus Keyboard Protocol

Alternating bi-directional communication
 Example: "K", scancode 0x8a, 10001010



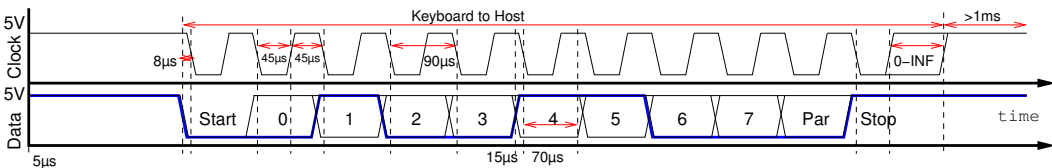
Example: "0x08"



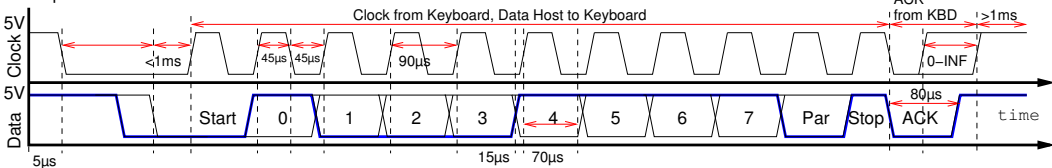
\$Id: kbd_signaling_mac.fig,v 1.2 2007/12/09 23:59:19 akurz Exp \$

AT/PS2 Keyboard Protocol

Master-Slave bi-directional, clock generated by keyboard
 Example: "B", scancode 0x32, 00110010



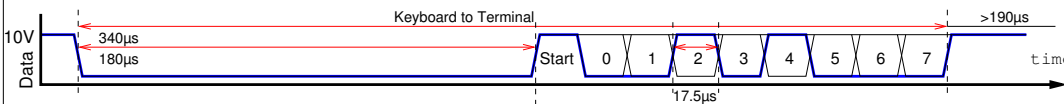
Example: "0xF1"



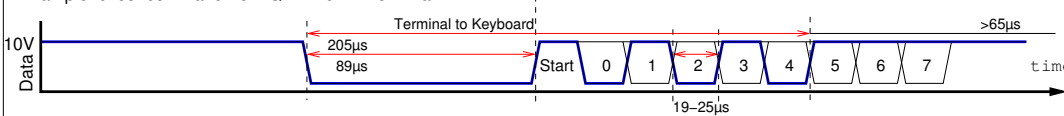
\$Id: kbd_signaling_ps2.fig,v 1.1 2007/12/11 10:22:45 akurz Exp \$

Qume QVT-1xx Keyboard Protocol

Single-Wire Bi-directional communication
 Example using QVT-102A: "K", scancode 0x14, 00010100



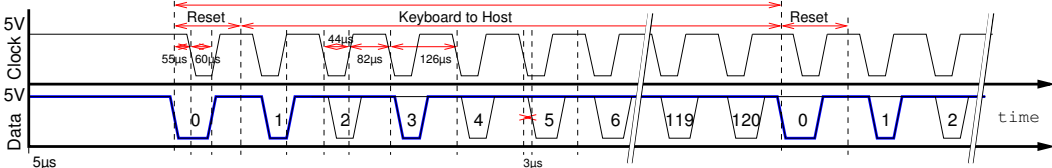
Example: 0xe5 command from QVT-102A-Terminal



\$Id: kbd_signaling_qvt1xx.fig,v 1.3 2008/07/01 10:06:48 akurz Exp \$

HP 9816 Keyboard Protocol

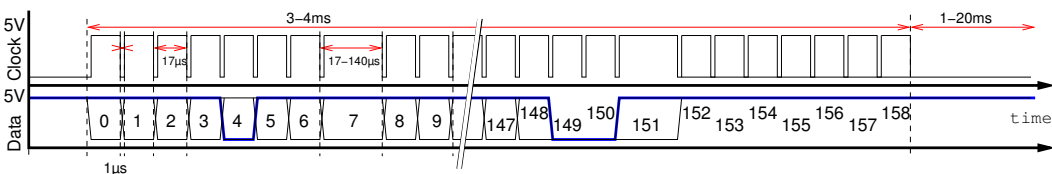
Clock and bit0 generated by host. Bit 0=Reset, communication from device to host
 Example: "Ctrl", bit 3. Sync-Bit 0, always set: bit 1, 0x72-0x76, never set: 0x6a-0x70



\$Id: kbd_signaling_hp9816.fig,v 1.1 2008/07/06 19:22:26 akurz Exp \$

Wyse WY-PCE Keyboard Protocol

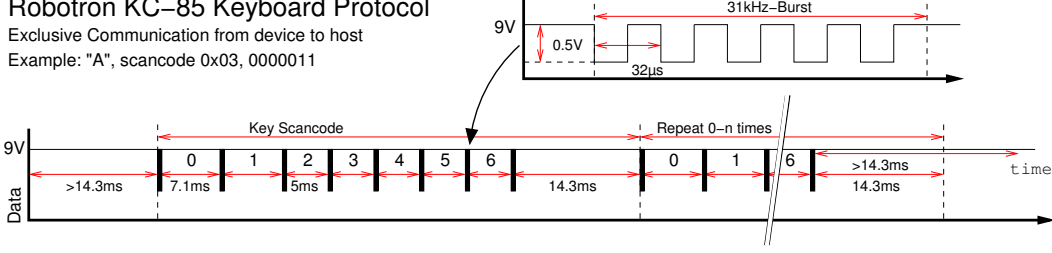
Clock generated by host, communication from device to host
 Example: "8", bit 4. always set: bit 149, 150. Clock-Bits 152-158 used for LED-signaling, -4: Caps, -2 Num, -1: Scroll



\$Id: kbd_signaling_wypce.fig,v 1.1 2008/04/25 19:17:24 akurz Exp \$

Robotron KC-85 Keyboard Protocol

Exclusive Communication from device to host
 Example: "A", scancode 0x03, 0000011



\$Id: kbd_signaling_kc85.fig,v 1.1 2007/12/12 23:25:14 akurz Exp \$